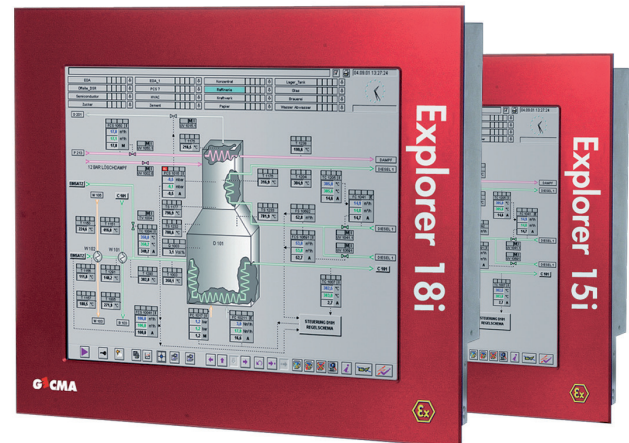


# GECMA Explorer 15i/18i 2nd Generation 15" and 19" Panel PC's for Hazardous Areas

- **Client specific modular system**
- **Ex Zone 1/2, Zone 21/22**
- **Designed for roughest environment**
- **Highest dependability**
- **Windows 7 - 32 bit Ultimate**
- **Non-wearing SSD**
- **Intel Atom 1.6 GHz**
- **2GB RAM**



**The Explorer range of hazardous-area panel PC's** is ideally suited to surviving the harsh environments typically found in Pharmaceutical, Chemical, Petro Chemical, Oil & Gas and Off-shore manufacturing. In addition to GECMA's Challenger Remote Terminals the Explorer Panel PC range has an in-built PC to integrate all essential functionality.

**Constructed as intrinsically safe panel mounting modules** and certified for Ex Zone 1/2 (Gas), Zone 21/22 (Dust) the Explorer panel PC's can be integrated easily into our standard enclosure, a huge range of special enclosures, as well as existing enclosures, walls and cabinets.

**Industry standard operating systems** WIN 7™ 32-bit ultimate, will ensure integration into existing IT environments.

**Designed for rough environment** the Explorer panel PC's are rugged and durable by stainless steel housing, lowest power dissipation and use of exclusively passive mechanical components like passive cooling and non wearing-SSD.

**The TFT displays** of the Explorer models are available with touch-screen or high brightness options and a wide range of communication ports, like USB, RS232, RS485 and RS422, to interface further electrical equipment or for the functionality of WLAN or Bluetooth.

**Requirement dependent operating devices** will perfectly support local plant conditions. Customer can choose from a range of operating devices like Keyboard, Trackball, Joystick, Touchpad, Mouse and further variations in material, functionality and customization.

**With our EFU converter** we have created the possibility to realize various ways of data transmission. The most important ways are: Ethernet via fibre optic/Redundant Ethernet /Redundant Ethernet via fibre optic, etc. Further options can be made available on request.

**The flexible modular concept** consisting of intrinsically safe components and the deliberate selection of high-quality materials allows the Explorer panel PC's to be used under the strictest of hygienic conditions as well as in aggressive production environments. Even under temperature conditions of -20°C to +45°C there is no functional impairment.

# GECMA Explorer 15i/18i PANEL PC's

January 2017

## SPECIFICATION

### ELECTRICAL

<b>Processor:</b>	Intel® ATOM™ N270, 1.6 GHz
<b>Chipset:</b>	Intel® 945GSE, 533 MHz FSB
<b>DRAM:</b>	2048 MB (DDR2 533 SODIMM)
<b>Cache:</b>	512K - 2nd Level
<b>Video:</b>	Intel Intel® GMA950, Supports DX 9.0c
<b>Screen resolution:</b>	<b>Explorer 15i:</b> 1024 x 768, 16 million colours, optional high brightness <b>Explorer 18i:</b> 1280 x 1024, 16 million colours, optional high brightness
<b>Touch screen technology (optional):</b>	Resistive 5-wire touch screen foil or glass cover sheet
<b>Mass storage:</b>	64 GB SSD or optional up to 4 x CF Cards (8 GB /16 GB)
<b>Operating system:</b>	Windows 7, 32-bit, Ultimate Edition
<b>Power supply:</b>	AC 100-240V AC, 50/60Hz, 120W (max.) optional DC 20-30V DC, 120W (max.)
<b>Power supply for external devices:</b>	Intrinsic safety ia Uo ≤ 12.5 V, Io ≤ 541 mA optional Intrinsic safety ia Uo ≤ 5.4 V, Io ≤ 420 mA
<b>Input Power:</b>	75W (typ.) / 120W (max.)
<b>Ethernet:</b>	10/100Base-T Intel® 82562V, IEEE 802.3
<b>Serial (RS232 – 16550 compatible):</b>	2 x Ex i (RXD, TXD, RTS, CTS) 1 x Ex e (RXD, TXD)
<b>USB:</b>	4 x USB Ex i plus 1 x USB Ex e
<b>RS485 Ex e: Optional</b>	Half Duplex, 2-wire RS485, up to 115.2K, auto TX enable, RLine=120Ω †
<b>RS422 Ex e: Optional</b>	4-wire (default) or auto TX, up to 115.2K † The RS232 Ex e port may be replaced by either of the options marked

### ENVIRONMENTAL

<b>Temperature</b>	Operating: -20°C to +45°C Storage: -20°C to +60°C (10-90% RH, non-condensing)
<b>Ingress protection</b>	Front IP66 / NEMA 4X

### MECHANICAL

<b>Housing material:</b>	Aluminium / Stainless steel
<b>Weight</b>	<b>Explorer 15i:</b> approx. 20kg (approx. 44lbs) <b>Explorer 18i:</b> approx. 25kg (approx. 55lbs)
<b>Dimensions (mm)</b>	<b>Explorer 15i:</b> 429 (W) x 340.5 (H) x 135 (D*) <b>Explorer 18i:</b> 505.9 (W) x 425.7 (H) x 135 (D*) * depth behind front mounting surface

### CERTIFICATION

<b>Authority</b>	ATEX, TIIS	
<b>Standards</b>	EN 61241-1:2004 EN 60079-0:2009 EN 60079-7:2007	EN 61241-0:2006 EN 60079-18:2004 EN 60079-11:2007
<b>Approved for</b>	Zone 1 ⊕ II 2G Ex e mb [ia] IIC T4 Ta: -20°C to +50°C (-4°F to 122°F)  Zone 21 ⊕ II 2D Ex tD A21 IP6X T120°C Ta: -20°C to +50°C (-4°F to 122°F)	
<b>Certificate No.</b>	IBExU 05 ATEX 1186 X	

### ORDERING INFORMATION

Two models are available - **Explorer 15i** or **Explorer 18i** - with a range of equipment options as defined below. For any optional features please contact our sales team.

Part No.: GEC-EE2 **15** **S** -A **E M I F** 000

Screen size = **15** or **18**

Screen type: \_\_\_\_\_

Keyboard: \_\_\_\_\_

Enclosure style:  
F=Floor mounting on 1260mm pedestal  
Z=No enclosure#

Pointing device:  
J=Joystick  
M=Mouse  
P=Touch pad  
T=Trackball  
Z=No pointing device\*

Legend:  
S = Standard, no touch  
F = Standard, foil touch  
H = High brightness, no touch  
I = High brightness, foil touch  
E = English  
F = French  
G = German  
Z = No keyboard\*

Standard system is AC power/12V output/RS232 serial port.  
\*Note that option "Z" is no pointing device and no keyboard  
#Note that option "Z" cannot be combined with option\* no pointing device and no keyboard = Order as display unit

### STANDARD ENCLOSURES



Special enclosure options on request



**Eaton Electric Limited,**  
Great Marlings, Butterfield, Luton  
Beds, LU2 8DL, UK.  
Tel: + 44 (0)1582 723633 Fax: + 44 (0)1582 422283  
E-mail: mtlenquiry@eaton.com  
www.gecma.com

© 2017 Eaton  
All Rights Reserved  
Publication No. EPS Exp 15i/18i Rev 3 240117  
January 2017

**EUROPE (EMEA):**  
+44 (0)1582 723633  
mtlenquiry@eaton.com

**THE AMERICAS:**  
+1 800 835 7075  
mtl-us-info@eaton.com

**ASIA-PACIFIC:**  
+65 6 645 9888  
sales.mtsing@eaton.com

The given data is only intended as a product description and should not be regarded as a legal warranty of properties or guarantee. In the interest of further technical developments, we reserve the right to make design changes.