



CHALLENGER 22 Lite

Remote PC Terminals
For modern Operation and Visualization on site
in industrial areas

COOPER Crouse-Hinds



CHALLENGER 22 Remote PC-Terminal

BENEFITS

- Modular configuration
- Trouble-free PC hardware changes and software updates
- Ambient Temperature -10° C to +50° C
- Low installation costs
- Excellent and bright picture quality
- Savings of software costs by cascading up to 4 CHALLENGER to one PC
- Upgrade kit also available as industrial version

APPLICATIONS



PHARMACEUTICAL
INDUSTRY



CHEMICAL
INDUSTRY



OIL & GAS



AUTOMOBILE
PRODUCTION



WASTE WATER
TREATMENT PLANT



COAL FIRED
POWER PLANT



INCINERATION
PLANT



OTHER
PROCESSES

tested by:



Flexible Modular Design

Upgrade Kit

Optional



LED Display

- Panel-mount module
- Ingress protection IP66 from front / NEMA 4x
- 22" screen diagonal (up to WSXGA)
- Capable of displaying more than 16 million colors



OPTIONAL TOUCH SCREEN Display

- Touch Screen as foil or glass version
- Resistive touch technology
- 5-wire technology
- Can be operated with gloves, pen and fingers
- Connection: RS 232 serial interface



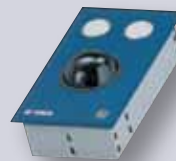
Keyboard

- Panel-mount module
- Ingress protection IP66 / NEMA 4X from front
- Foil protected short stroke keyboard
- 105 keys, IBM* compatible
- Standard layouts: German, English, French
- More than 30 languages on request
- Special layouts on request
- Polyesterfoil printed from behind - resistant against many solvents



Mouse

- Panel-mount module
- Ingress protection IP66 from front / NEMA 4X
- 4-step pressure-sensitive mouse guidance
- 2 pushbuttons



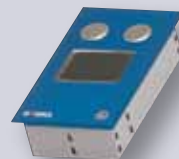
Trackball

- Panel-mount module
- Ingress protection IP65 from front
- 55 mm ball
- 2 pushbuttons



Joystick

- Panel-mount module
- Ingress protection IP66 from front / NEMA 4X
- High-precision mouse guidance
- Wearless up to 15 million actuations
- Extremely low-maintenance
- 2 pushbuttons, optionally 3 pushbuttons
- Button-in-joystick function optionally



Touch Pad

- Panel-mount module
- Ingress protection IP 66 from front/ NEMA 4X
- Special resistive foil
- High-definition resolution - up to 200dpi
- 2 pushbuttons
- Can be operated with gloves, pen and fingers



Card Reader

- Panel-mount module
- Ingress protection IP66 from front /NEMA 4X
- Non-contact identification
- Mifare protocol as standard (others on request)
- Suitable for the majority of company ID's
- Connection: RS 232 serial interface

CHALLENGER 22 Remote PC-Terminal

The Remote Operator Station “Challenger”, with over 15.000 units installed in hazardous and industrial locations worldwide, is the most successful product of its kind. It now receives an upgrade kit for a 22” wide screen solution that allows the user to keep the existing supporting infrastructure in place. The upgrade kit is designed for users who are migrating to a new Process Control System that offers a higher resolution and demands a bigger screen to display more information without the need to replace the existing visualization solution in the field.

Users can leave their existing installation as is and only need to unplug the data connectors, dismount the display housing, replace it with the new 22” display housing from the upgrade kit and just need to reconnect the connectors in the housing and they are ready to go. The upgrade kit is fully backward compatible to the existing system and will meet the specifications for temperature range, Ingress Protection rating of the existing challenger solution. The 22” display offers a resolution of 1680x1050 pixels in a picture ratio of 16:10 on a true 22 inch screen and will be made available with or without Touch Screen functionality.

Gecma also offers a wide variety of special, customized housings tailored to applications in industrial areas where space is limited or where various control elements must be integrated into the visualization solution.

Gecma – Pioneers in HMI

Enclosures

FHP STANDARD ENCLOSURE



- Hygienic, ergonomic Field Desk Enclosure to house the Display, Keyboard, Mouse or Trackball, Card Reader
- Keyboard inclined by 30°
- Protection system IP 66 / NEMA 4X
- Stainless Steel 1.4301 (1.4404 /316L opt.)
- Polished to 240 granulation



Wall mounting



Floor mounting



Ceiling mounting

*Keyboard housing and mounting pipe are optional and not required for upgrade kit

Interfaces and Camera



RS 232 Interface

- Fully duplex-capable RS 232 Interface
- Intrinsically safe model or industry model including separate data cable for the connection of all RS 232-compatible equipment

SPECIAL ENCLOSURES



VHH



VH



DH



DTH



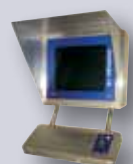
SH 1



SH 2



SH 3



SH 4



SH 5



SH 6



SH 7



SH 8



SH 9



SH 10



SH 12



SH 15

Options and Accessories



Key Switch SW2

- Key switch integrated into the Rack 42 / Rack 84
- To lock Keyboard / Mouse / Trackball on the CHALLENGER or to lock the control room operation



Key Switch SW1

- Key Switch for locking the Keyboard / Mouse / Trackball on the CHALLENGER
- Integrated in the CHALLENGER enclosure
- Ingress protection IP 67 from front / NEMA 4X



Emergency Stop Button

- Emergency Stop Button to turn off individual connections (local connection)
- Ingress protection IP 65 from front

SALES OFFICES

AUSTRALIA

MTL Instruments Pty Ltd, 9 /12 Billabong Street,
Stafford, Queensland 4053
Australia

Tel: + 61 1300 308 374 Fax: + 61 1300 308 463
E-mail: enquiries@mtlaus.com.au

CHINA

Cooper Electric (Shanghai) Co. Ltd. Room 2001, China Life Tower,
16 Chao Yang Men Wai Street,
Chao Yang District, Beijing, China 100020

Tel: + 86 10 5980 0288 Fax: + 86 10 8562 5725
E-mail: mtl-cn@cooperindustries.com

FRANCE

MTL Instruments sarl, Leş Carrés du Parc
10 rue des Rosiéristes, 69410 Champagne au Mont d'Or
France

Tel: + 33 (0)4 78 64 98 32 Fax: + 33 (0)4 78 35 79 41
E-mail: info@mtl-inst.fr

GERMANY

MTL Instruments GmbH, An der Gumpesbrücke 17
D-41564 Kaarst, Germany

Tel: + 49 (0)2131 718930 Fax: + 49 (0)2131 7189333
E-mail: info@mtl.de

INDIA

MTL India, No.36, Nehru Street
Off Old Mahabalipuram Road
Sholinganallur, Chennai - 600 119, India

Tel: + 91 (0) 44 24501660 /24501857 Fax: + 91 (0) 44 24501463
E-mail: sales@mtlindia.com

ITALY

MTL Italia srl, Via Cantù 11
I - 20092 Cinisello Balsamo MI, Italy

Tel: + 39 (0)2 61802011 Fax: + 39 (0)2 61294560
E-mail: info@mtl-inst.it

JAPAN

Cooper Crouse-Hinds Japan KK,
MT Building 3F
2-7-5 Shiba Daimon, Minato-ku,
Tokyo, Japan 105-0012

Tel: + 81 (0)3 6430 3128 Fax: + 81 (0)3 6430 3129
E-mail: info@cooperindustries.jp

SOUTH KOREA

Cooper Crouse-Hinds Korea
12F, Vision Tower
707-2 Yeoksam-Dong Gangnam-Gu,
Seoul 135-080, South Korea.

Tel: +82 2 538 3481 Fax: +82 2 538 3505
E-mail: MTL-Korea@cooperindustries.com

NETHERLANDS

MTL Instruments BV
Terheijdenseweg 465, 4825 BK Breda
The Netherlands

Tel: +31 (0) 76 7505360 Fax: +31 (0) 76 7505370
E-mail: mtl.benelux@cooperindustries.com

SINGAPORE

Cooper Crouse-Hinds Pte Ltd
No 2 Serangoon North Avenue 5, #06-01 Fu Yu Building
Singapore 554911

Tel: + 65 6 645 9888 Fax: + 65 6 487 7997
E-mail: sales.mtlsing@cooperindustries.com

UNITED ARAB EMIRATES

MTL Instruments, Villa No. 4, Sector 2-17
Street 6, PO Box 53234
Abu Dhabi, UAE

Tel: + 971 2 446 6840 Fax: + 971 2 446 6841
E-mail: mtlgulf@mtl-inst.com

UNITED KINGDOM

Measurement Technology Limited,
Great Marlings, Butterfield, Luton
Beds LU2 8DL

Tel: + 44 (0)1582 723633 Fax: + 44 (0)1582 422283
E-mail: enquiry@mtl-inst.com

AMERICAS

Cooper Crouse-Hinds MTL Inc.
3413 N. Sam Houston Parkway W.
Suite 210, Houston TX 77086, USA

Tel: + 1 281-571-8065 Fax: + 1 281-571-8069
E-mail: csinfo@mtl-inst.com

GECMA SERVICE

All product information / technical data sheets / drawings and a configuration tool to optimize your human-machine interface can be found at: www.GECMA.com



Configurator



Products



News



Support
Technical drawings



Calls returned within
24 hours



Fast delivery time



Offers made
within 48 hours



Configure your
Terminal at
www.GECMA.com

HEADQUARTERS

GECMA Components GmbH,

Heisenbergstrasse 26-40, D-50169 Kerpen, Germany. Tel: +49 2237 6996-0 Fax: +49 2237 6996-99

www.gecma.com

e-mail: info@gecma.com

**COOPER Crouse-Hinds**